

## PWND of je worst lust special edition

This MSXDEV entry is done within one day (20 hours of programming/designing/debugging) and was my first real BASIC program in 20 years. I hope you have as much fun playing this game as I had programming it ☺

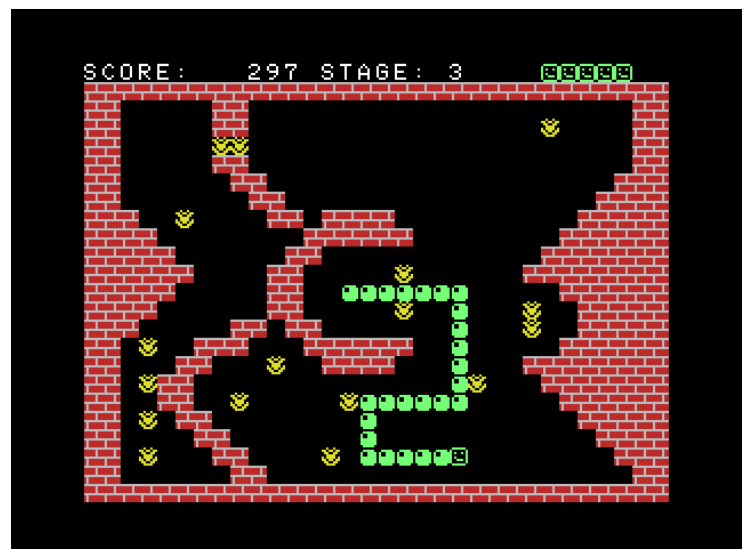
### The Intro Screen:

The intro screen has a difficulty level selector which can be set by using the left or keys or your joystick. When you are ready selecting the difficulty levels just push space or the joystick fire button to start the game.



### Game Objective:

Collect all the yellow flowers without getting tangled up in yourself. You cannot hit walls either or else a life will be deducted. If your last life is lost it is game over and the title screen will appear.



# PWND

---

GREETINGS GO TO:

- THE OPENMSX TEAM
- THE BLUEMSX TEAM
- THE MRC USERS
- MSX POSSE
- ALL MSX(DEV) FANS

AND YOU!

SPECIAL THANKS TO:

- BIFI
- HAP

Keep MSX alive and see you next year with another MSX DEV entry!!